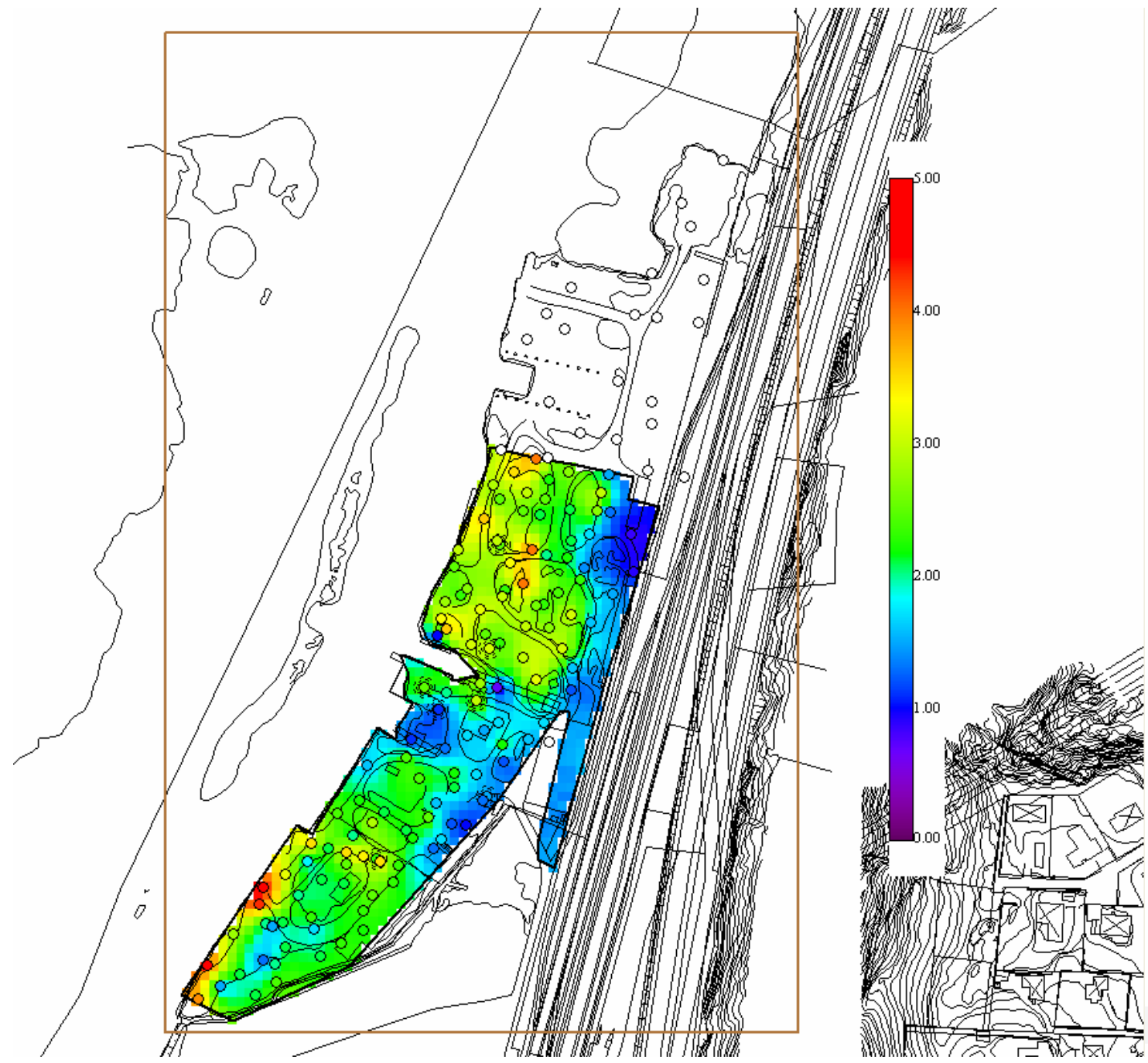




## Bohus varv

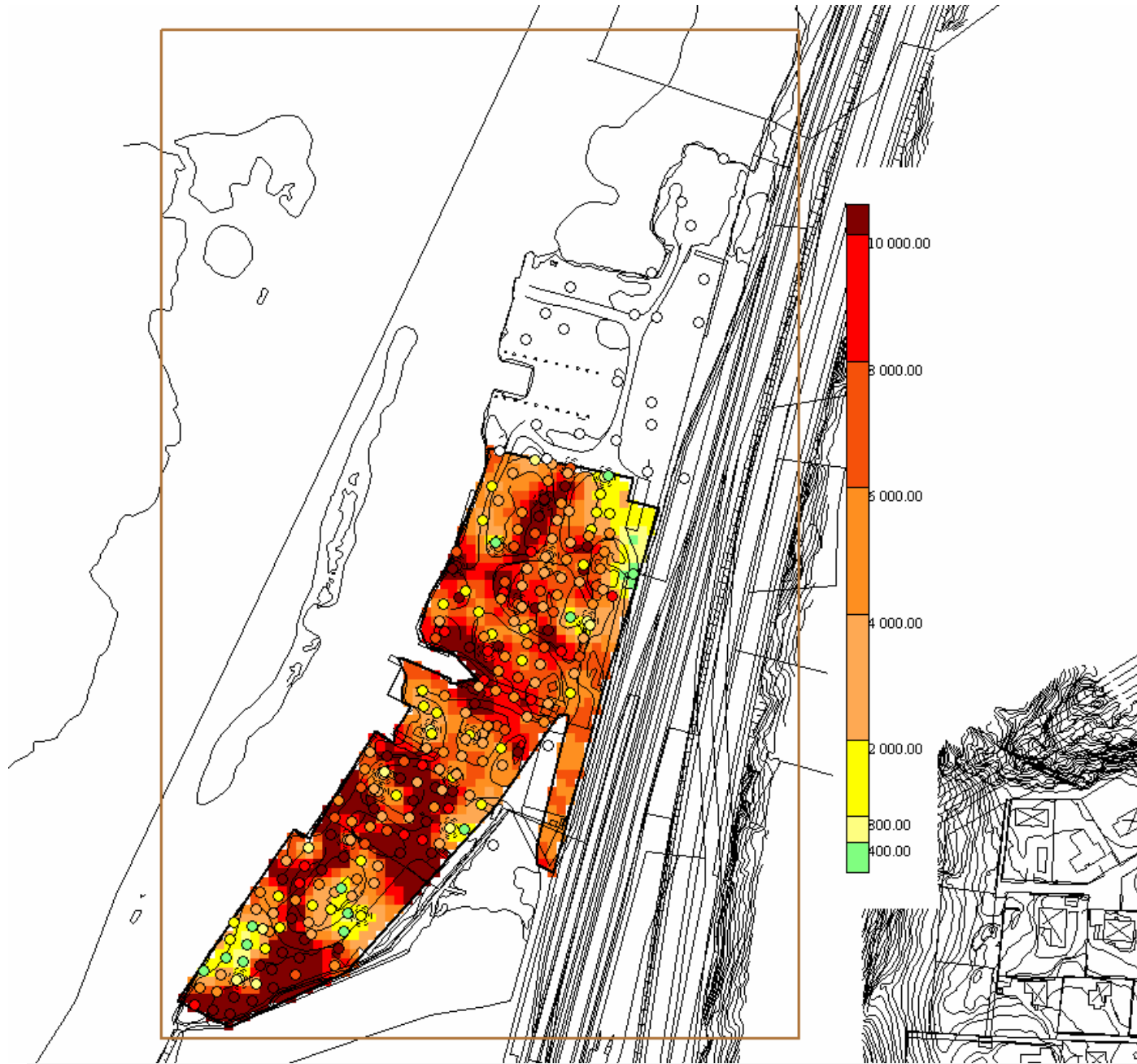
Modellering av halter (Pb, Hg), volymer och mängder för olika åtgärdsalternativ



Djup fyllning (m)

Område B2+BV



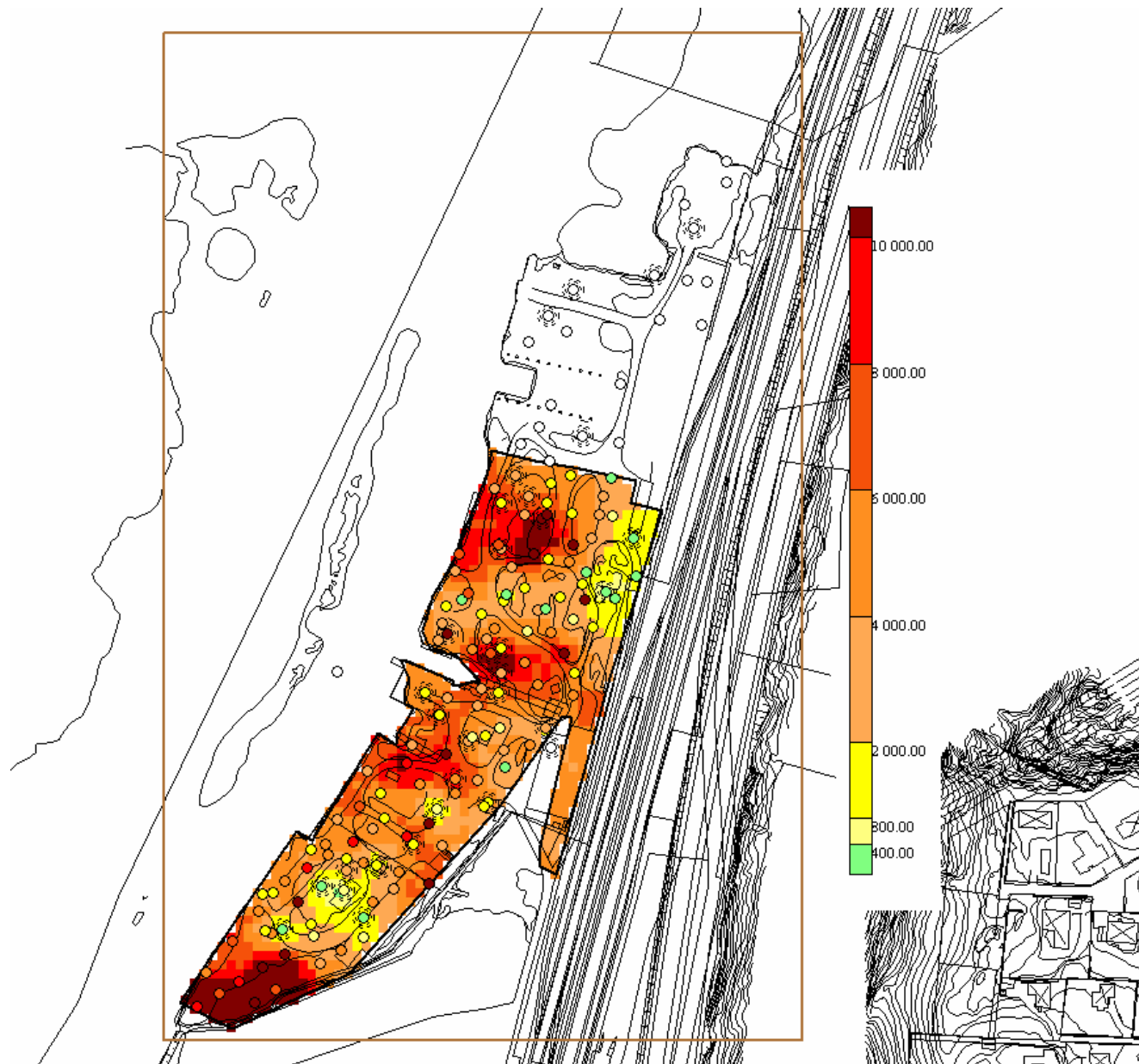


**Blyhalter (mg/kg)**

**Djup: 0-0,5 m**

**Område B2+BV**

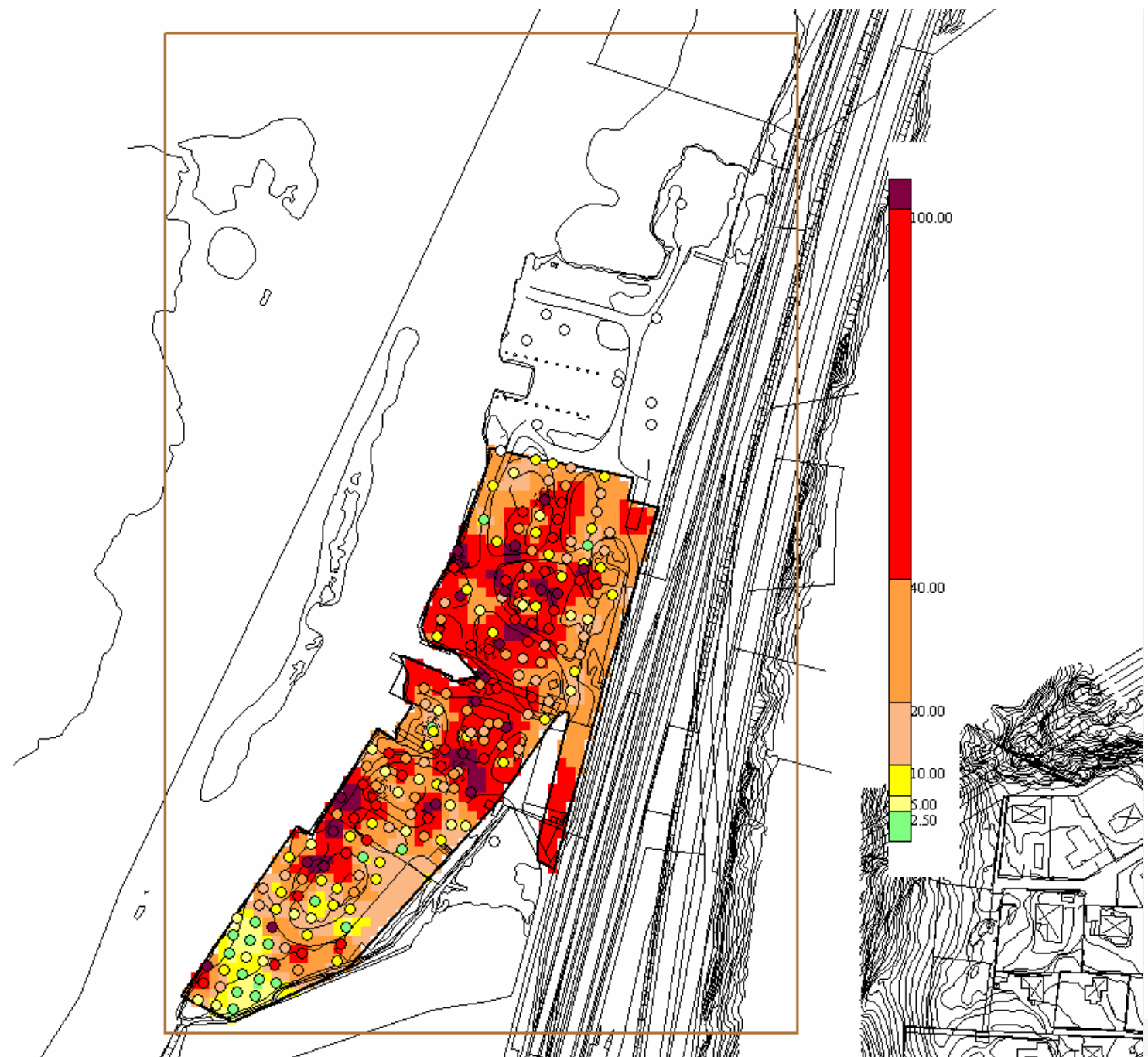




**Blyhalter (mg/kg)**

**Djup: >0,5 m**

**Område B2+BV**

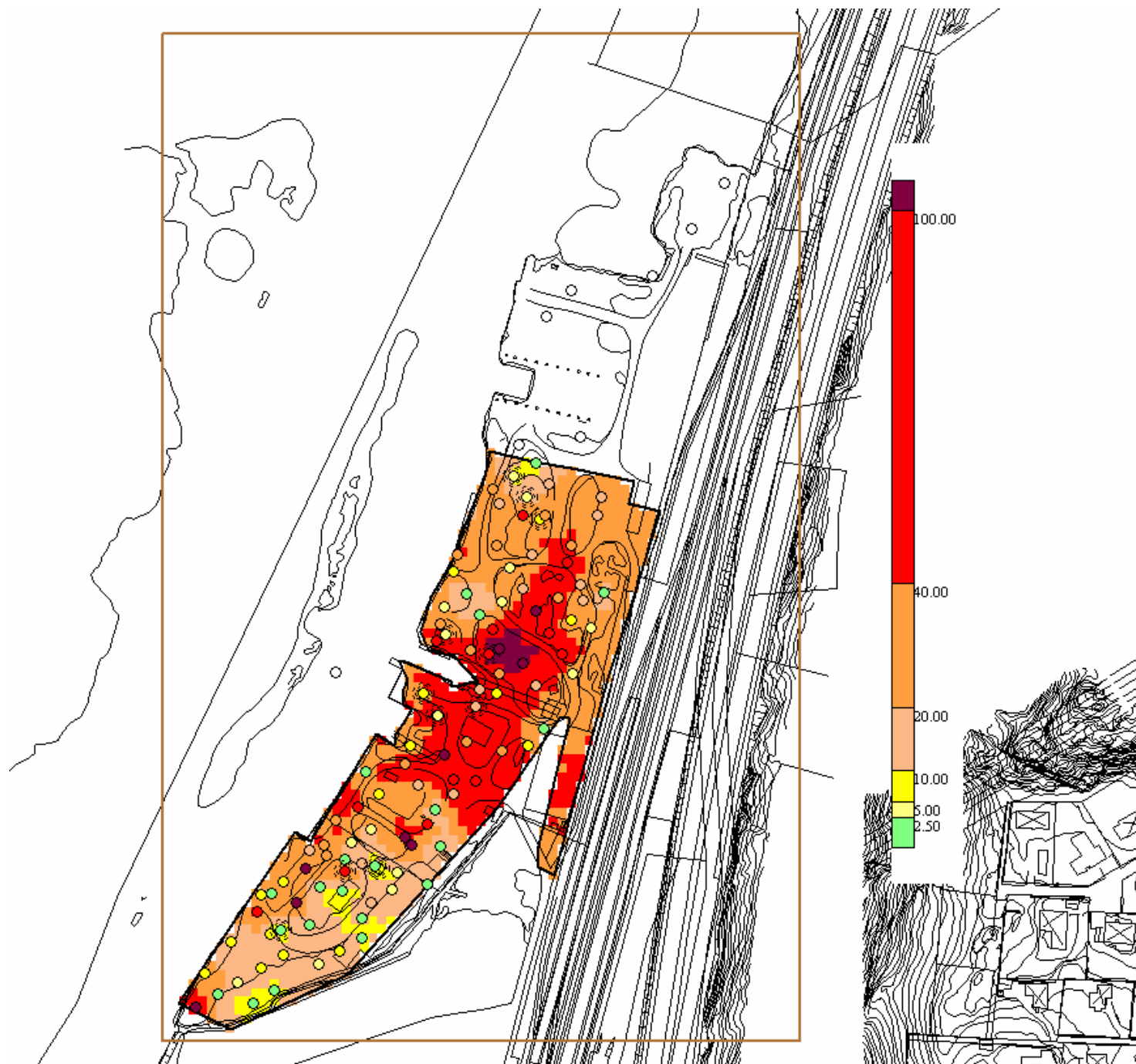


**Kvicksilverhalter  
(mg/kg)**

**Djup: 0-0,5 m**

**Område B2+BV**





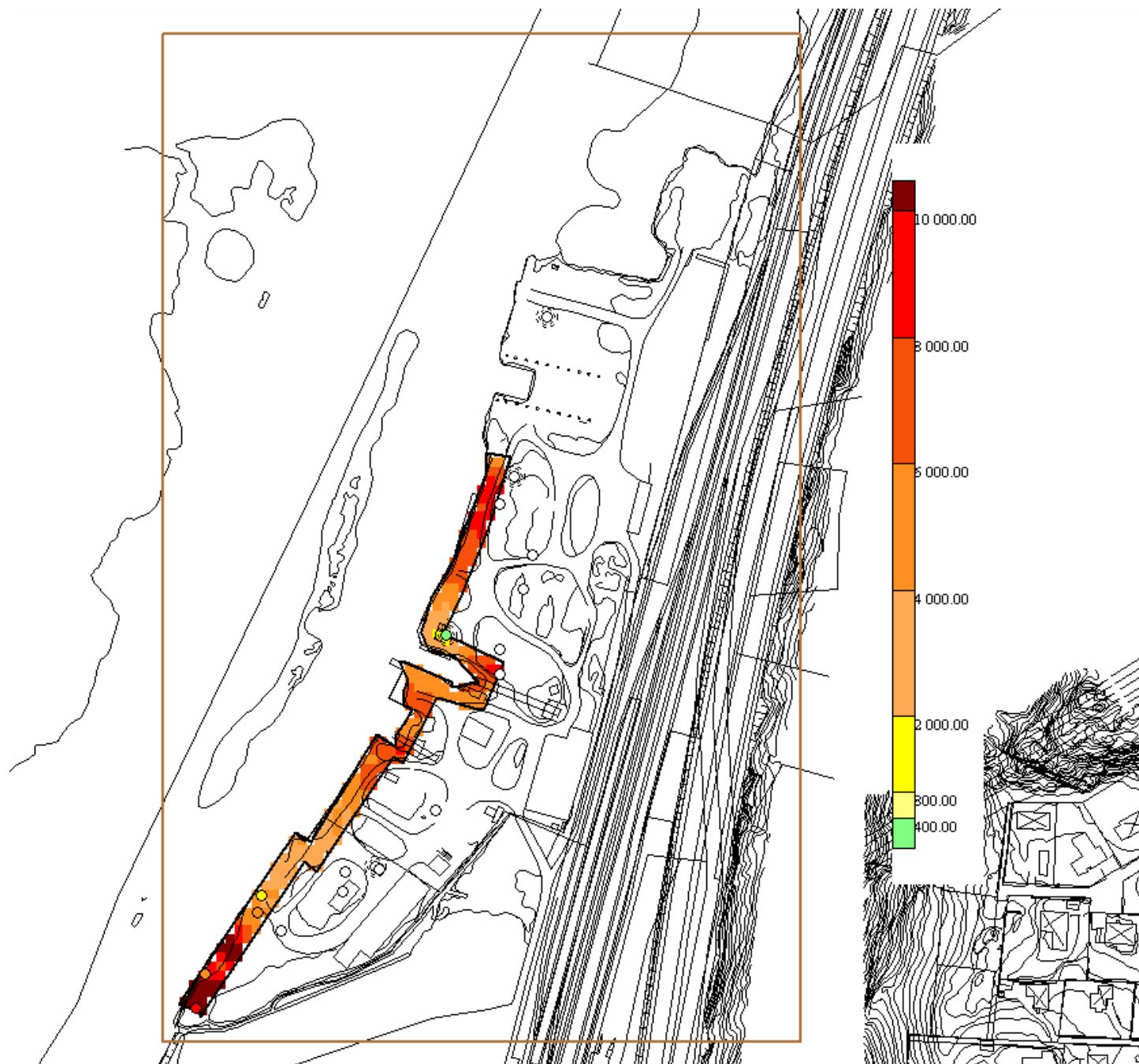
**Kvicksilver-  
halter (mg/kg)**

**Djup: >0,5 m**

**Område B2+BV**







**Blyhalter (mg/kg)**

**Djup: > 2 m**

**Område  
Strandlinje**

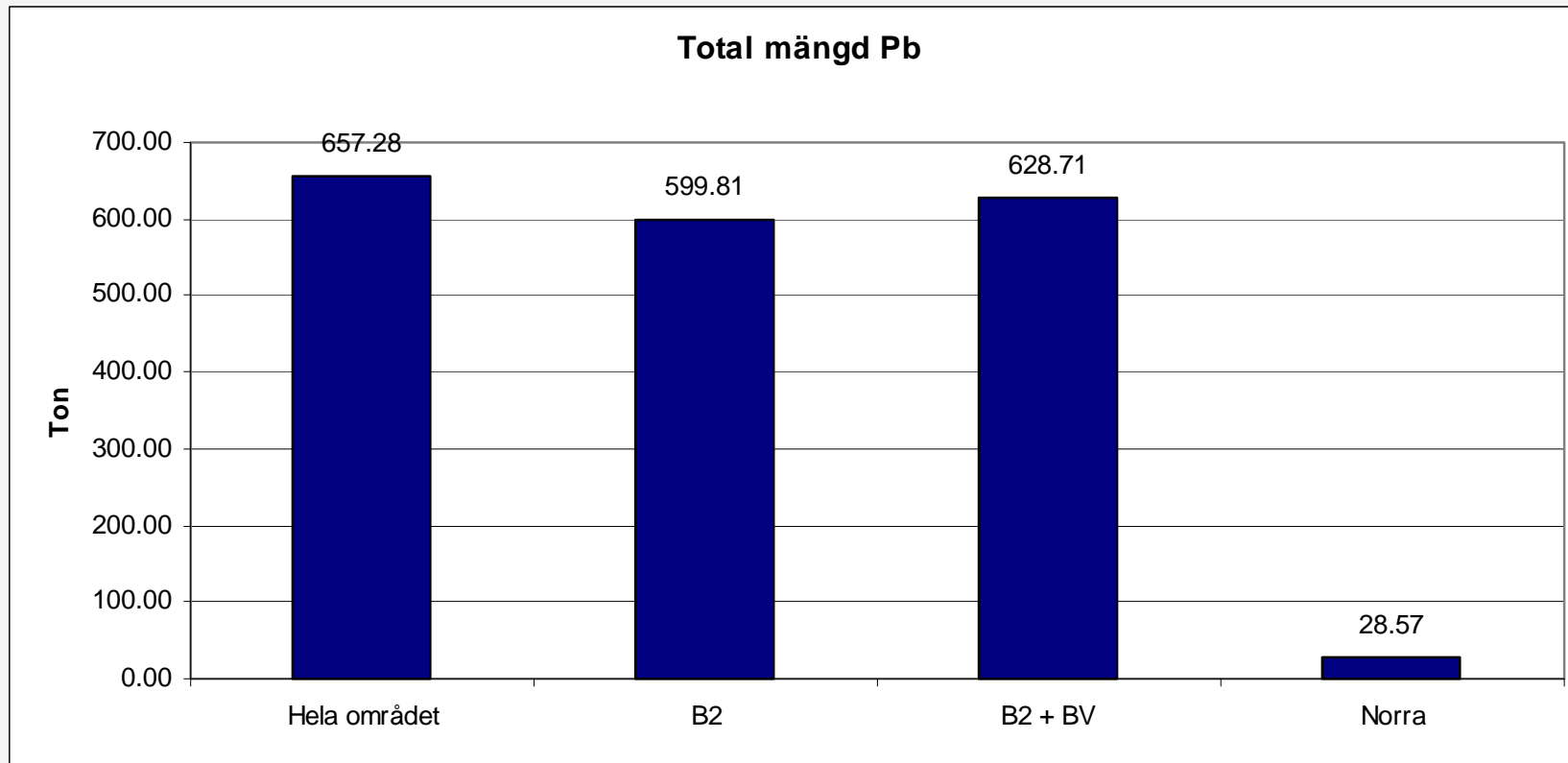


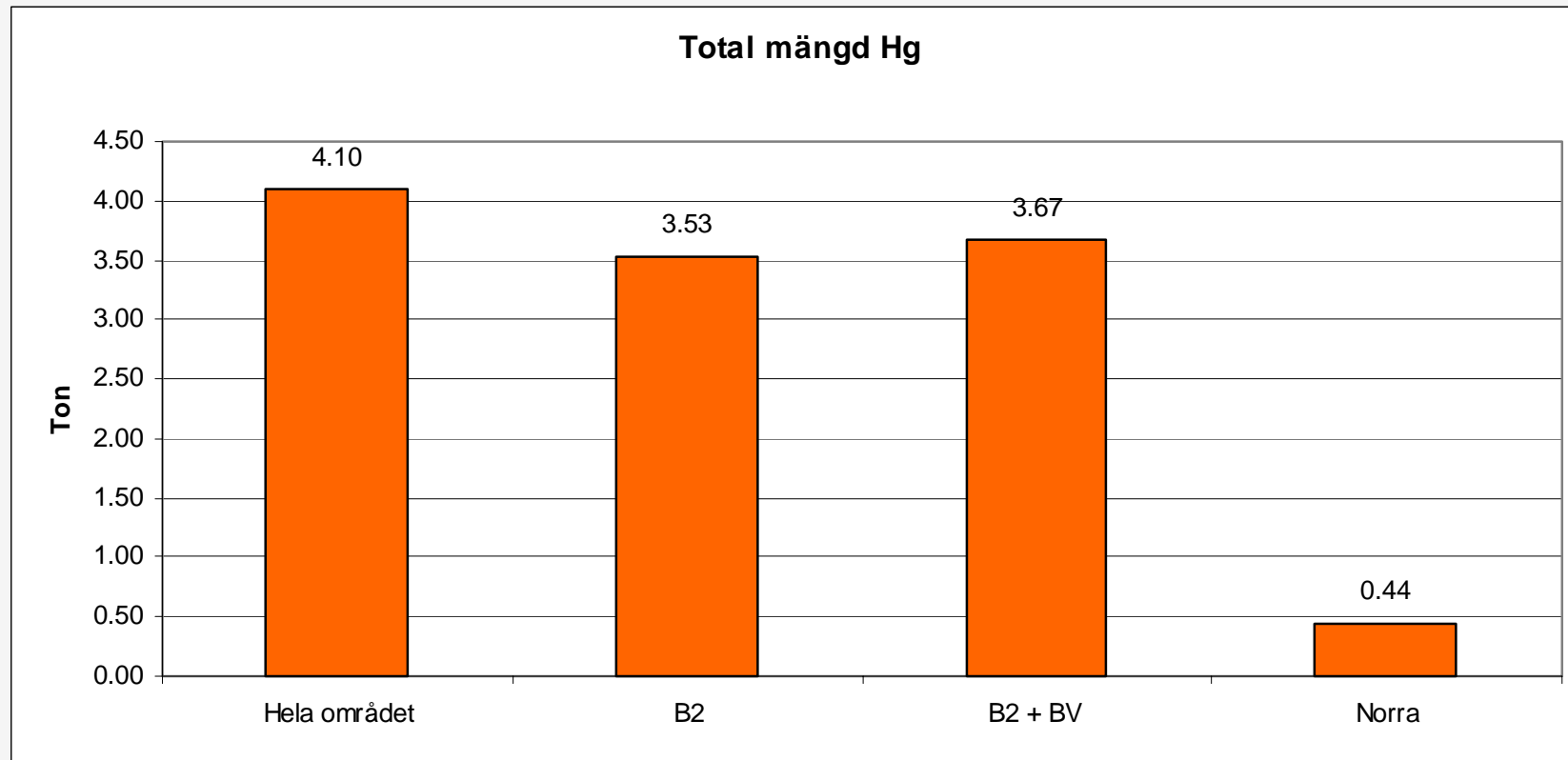
**Kvicksilverhalter  
(mg/kg)**

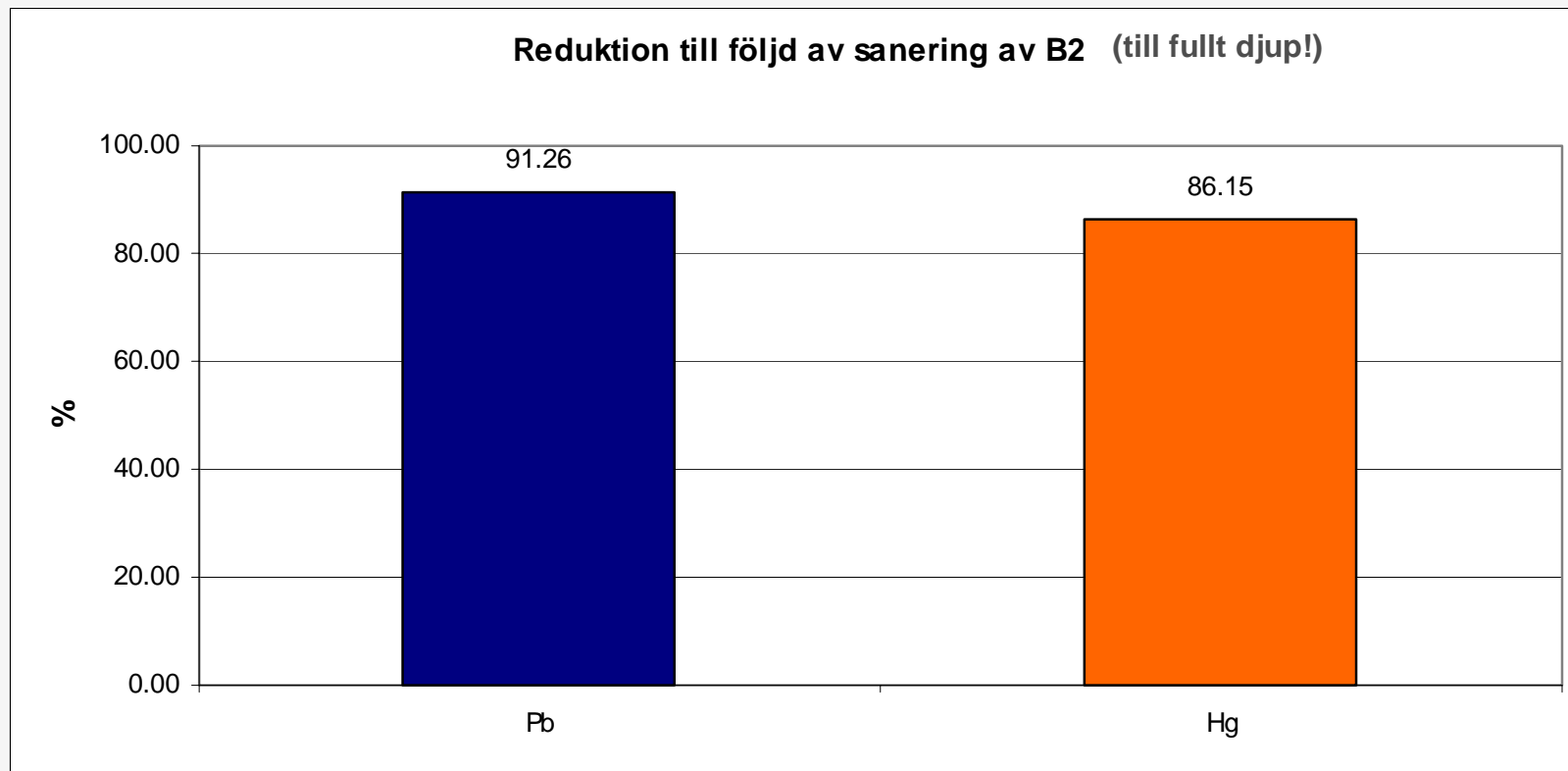
**Djup: > 2 m**

**Område  
Strandlinje**

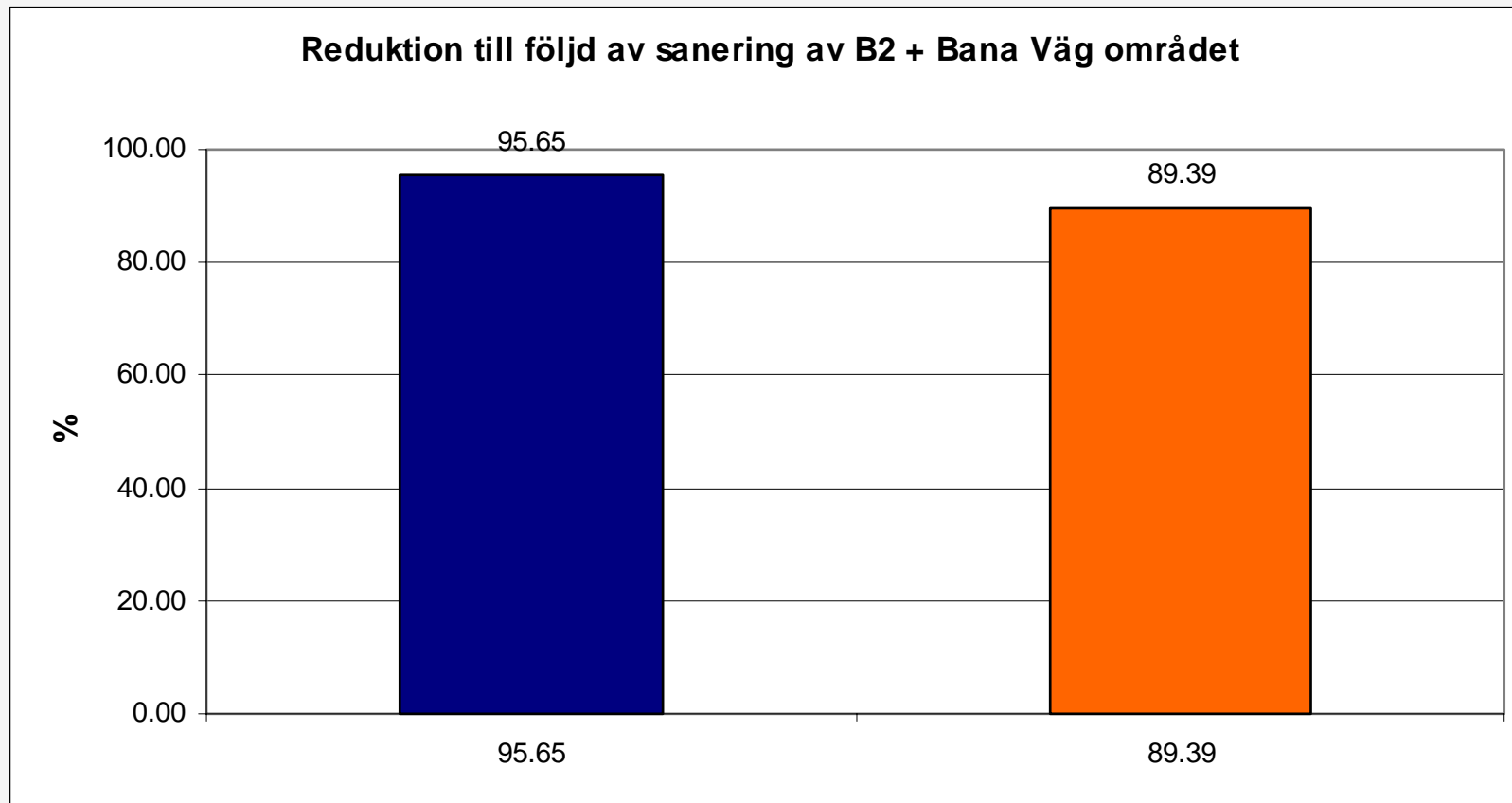


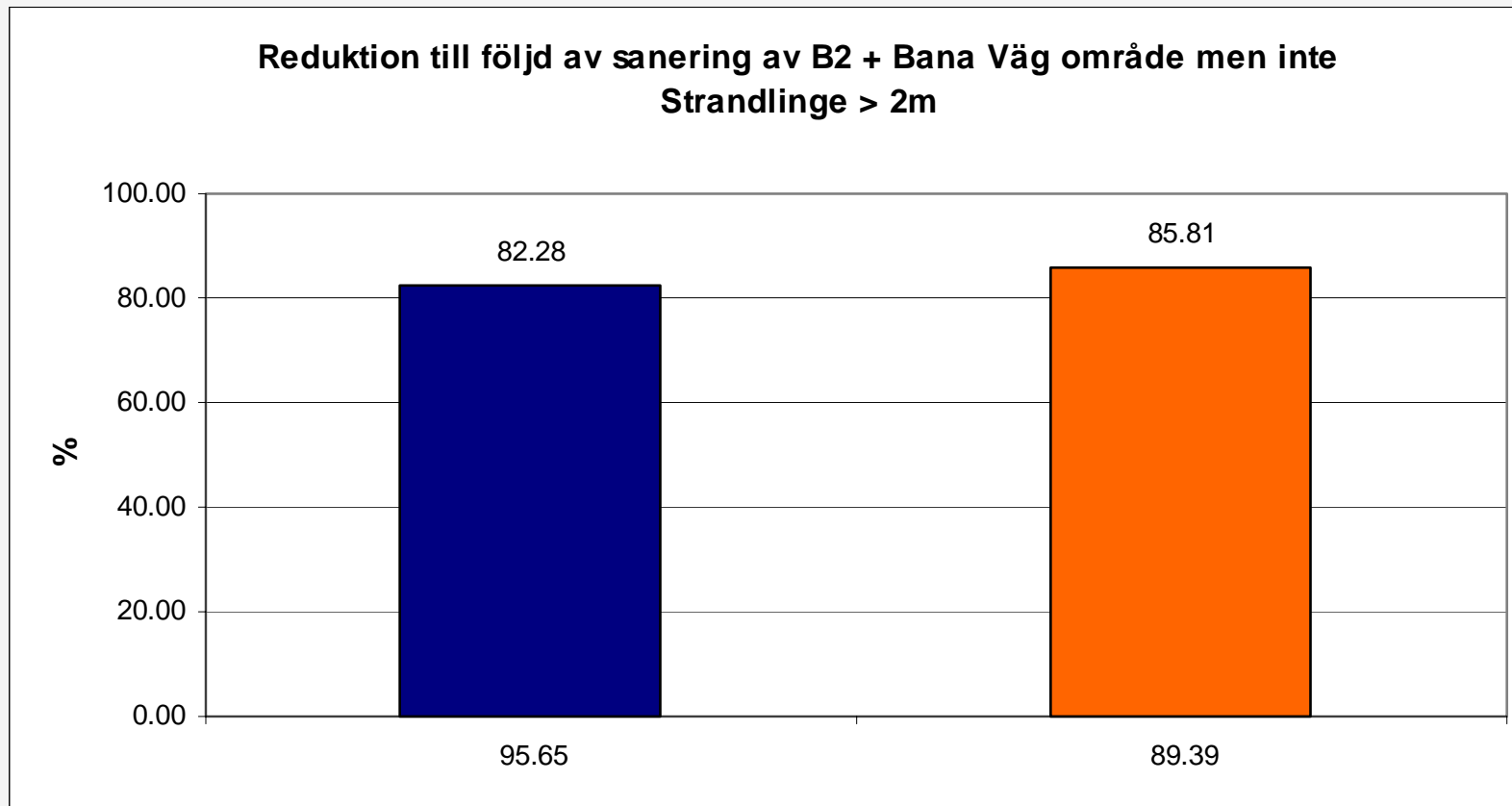




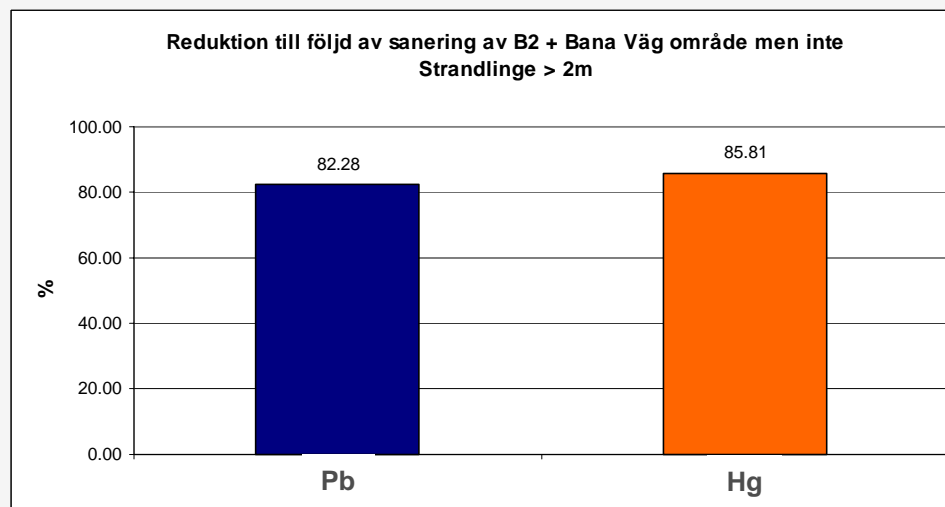
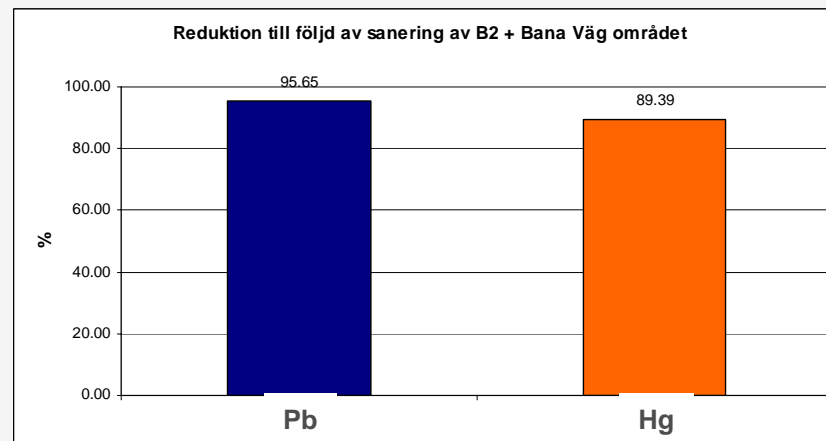
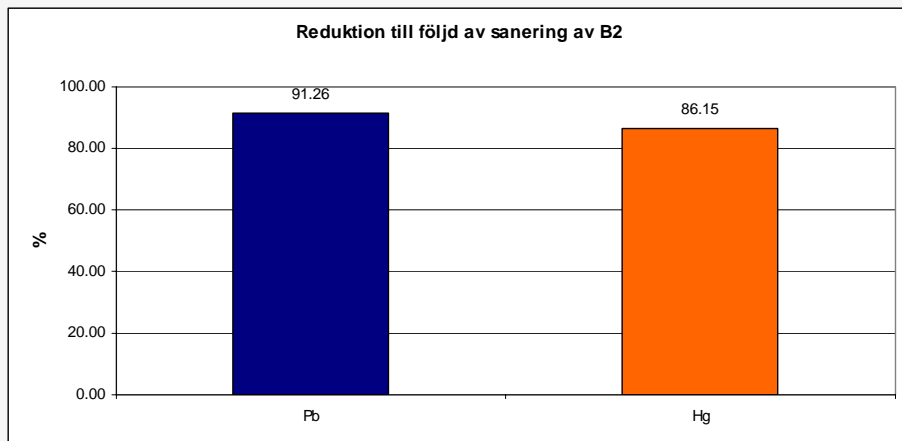


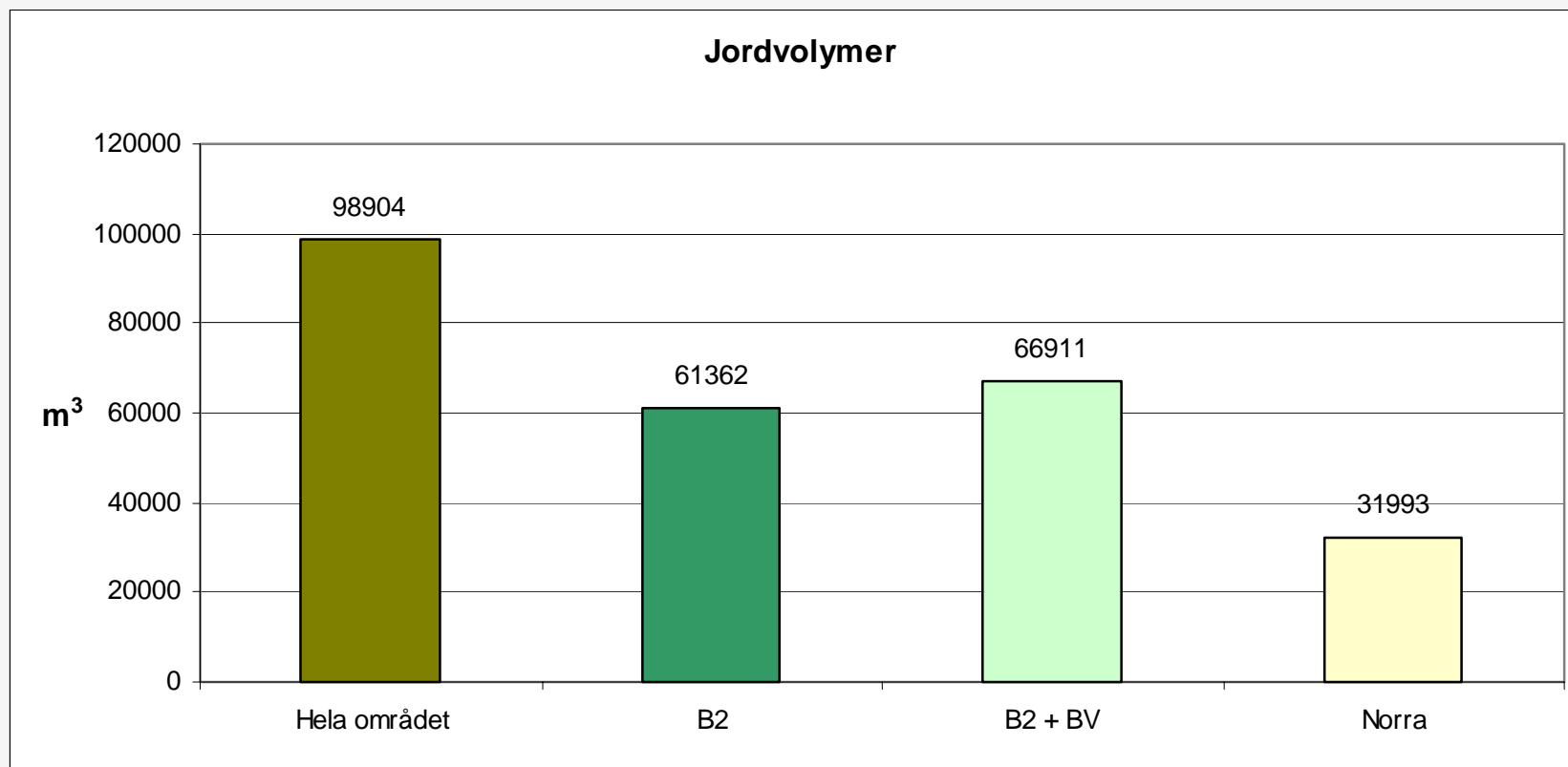
### Reduktion till följd av sanering av B2 + Bana Väg området











Strandlinjen? Ca 5000 m<sup>3</sup>